

October 2009

www.mycraftrobo.co.uk

Tel: 01708 731294

creativeprinters@btconnect.com

What's new in DesignMaster II?

Now that the long summer nights are over, and the evenings are drawing in, many crafters are filling the long winter evenings designing their fabulous Christmas projects that make the holiday season so special.

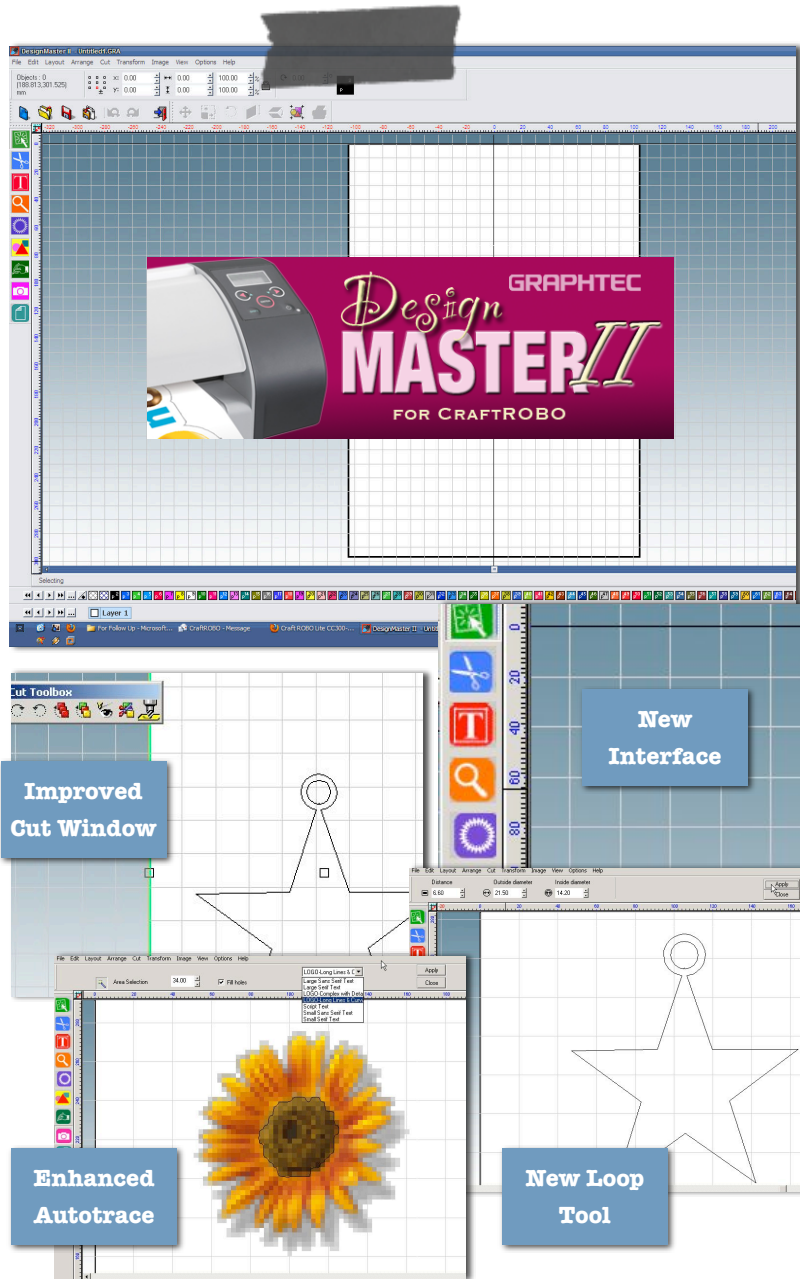
Now is the perfect time to dig out your stash, set up your CraftROBO and make a start on your Christmas cards, tags and gifts.

UPGRADE YOUR DESIGNMASTER SOFTWARE

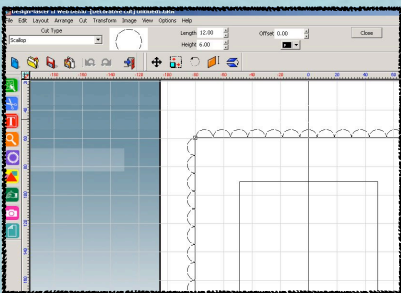
To give you that creative edge, we are very pleased to launch DesignMaster II for the CraftROBO.

DesignMaster II adds many requested features to the popular original DesignMaster. Over the page, we will introduce you to the fantastic new features introduced in DesignMaster II. This evolution in the software will not only enhance your creativity, but has also been designed to make your crafting easier

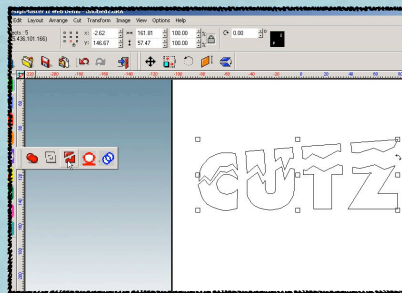
Don't forget, all of the new or improved features have been suggested or requested by you, the crafter.



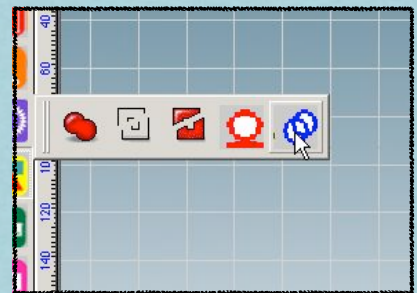
A few highlights from DesignMaster II



DECORATIVE CUT TOOL This creative tool is totally new to DesignMaster II, and allows you to create fabulous decorative edges.

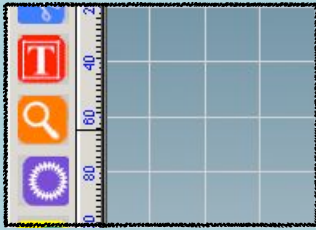


GINSU KNIFE TOOL You are probably familiar with a Ginsu knife for chopping fresh food. This digital version allows you to chop and slice your creations.



IMPROVED USER INTERFACE big icons and a more logical interface makes DesignMaster II so much easier to use.

WHAT'S NEW?



Large Button Interface

Intuitive large buttons simplify the user operation

Enhanced Cut Preview

This improved cut window now enables rotation and cut by colour with one click

Ginsu Knife Tool

This cool little utility allows you to cut and slice images easily

Hanger Loop Tool

Easily create hangers for pendants, mobiles etc

Decorative Cut Tool

Cut up to 10 different style decorative borders.

Freehand Drawing Tool

this is our favourite, with a laptop trackpad, use your finger like a paint brush to create freehand shapes like the Christmas tree opposite.

Scan and Trace

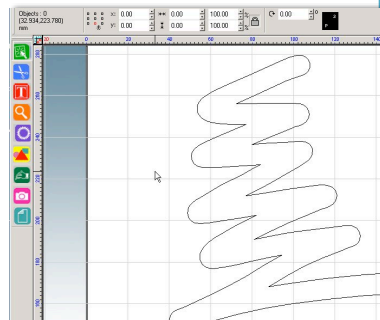
Improved scan and trace tools allow you to select multiple areas with slight colour variations to create a single vector.

Expand your creativity with DesignMaster II

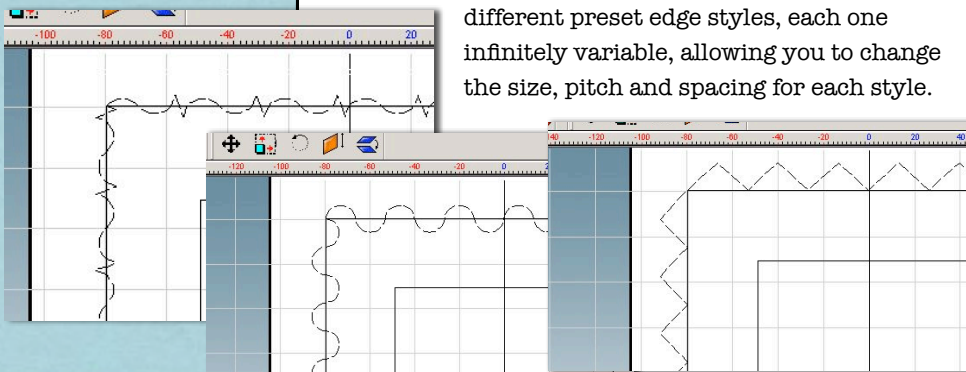


WE ARE VERY EXCITED ABOUT THE LATEST DESIGNMASTER II. WITH 10 FABULOUS NEW FEATURES AND LOADS OF ENHANCEMENTS, THIS UPGRADE IS A MUST FOR THE SERIOUS CRAFTER.

Two brand new tools are at the heart of DesignMaster II, the freehand drawing tool for added creativity and the time saving decorative border tool. If you have a trackpad or on your laptop, simply hold down the mouse button with your left hand, and sketch away with your index finger on the right hand. This is our staff favourite.

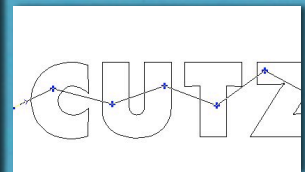


The decorative border tool creates 10 different preset edge styles, each one infinitely variable, allowing you to change the size, pitch and spacing for each style.

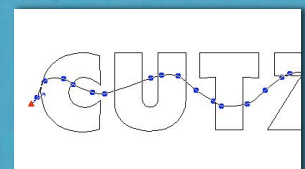


GINSU KNIFE

Click and Drag to slice a shape in half.



Right Click to edit the cut line



Hit Return

